



We are holding an

INFORMATION SESSION

for families interested in the Inquiry Hub

on Tuesday January 22nd, 6pm to 7:30pm, at Millside Centre.

The Inquiry Hub is for all types of learners who share a passion for knowing and investigation and have an interest in using technology to seek answers to their questions. It will particularly appeal to families who are seeking a smaller, cooperative learning environment where students can focus on their interests individually and in small teams. Ideally, students should be interested in one of our three focus areas:

- community and global issues
- environmental sustainability
- media art, design and technology

The program will appeal to students who are keen to learn but desire a less rigidly structured learning schedule. This may include students who possess one or more of these attributes:

- want a chance to apply their learning in practical ways
- have difficulty focusing in regular structured class settings
- are interested in doing deep research on a specific subject of interest
- enjoy learning with technology
- are interested in learning through social networks
- have a strong sense of direction and want to make a difference in the world

In the orientation session, we will provide information on the inquiry model and help families to understand the philosophy and its benefits for some learners. We will also be able to answer questions about the structure and the cultural routines we establish within the program.

Inquiry Hub

Web: <http://InquiryHub.org>

Phone: 604-936-4285

FAQ's: <http://inquiryhub.org/q-a>

Millside Centre

1432 Brunette Ave,

Coquitlam, BC

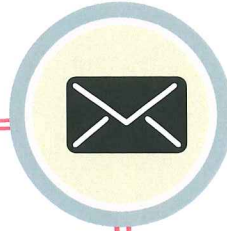
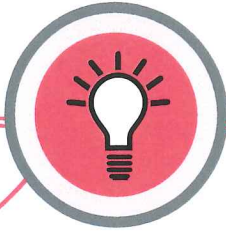
Map: <http://goo.gl/maps/Wm9R7>

Inquiry HUB

CONNECT | CREATE | LEARN

curious

adjective:
eager to know or learn something



inquiry

noun: an act of asking for information

inventive

adjective:
• (of a person) having the ability to create or design new things or to think originally



unique

adjective:
being the only one of its kind; unlike anything else

social networks

technology based learning

individual learning

passion for knowledge

mentorship

project focus



The COL Inquiry Hub

is a grade 8-12 program that encourages students to explore their own questions from key themes:

- community and global issues
- environmental sustainability
- media art, design and technology

The Inquiry Hub is designed to suit passionate learners who:

- want to apply learning in a practical way
- are interested in learning with technology
- find structured classes do not meet their learning needs
- are interested in learning through social networks
- desire to work on projects which make a difference

<http://inquiryhub.org>

web

admin@inquiryhub.org

e-mail

604.936.4285

tel

COQUITLAM
(((((OPEN Learning

