



# Geography Town Assignment: Calgary

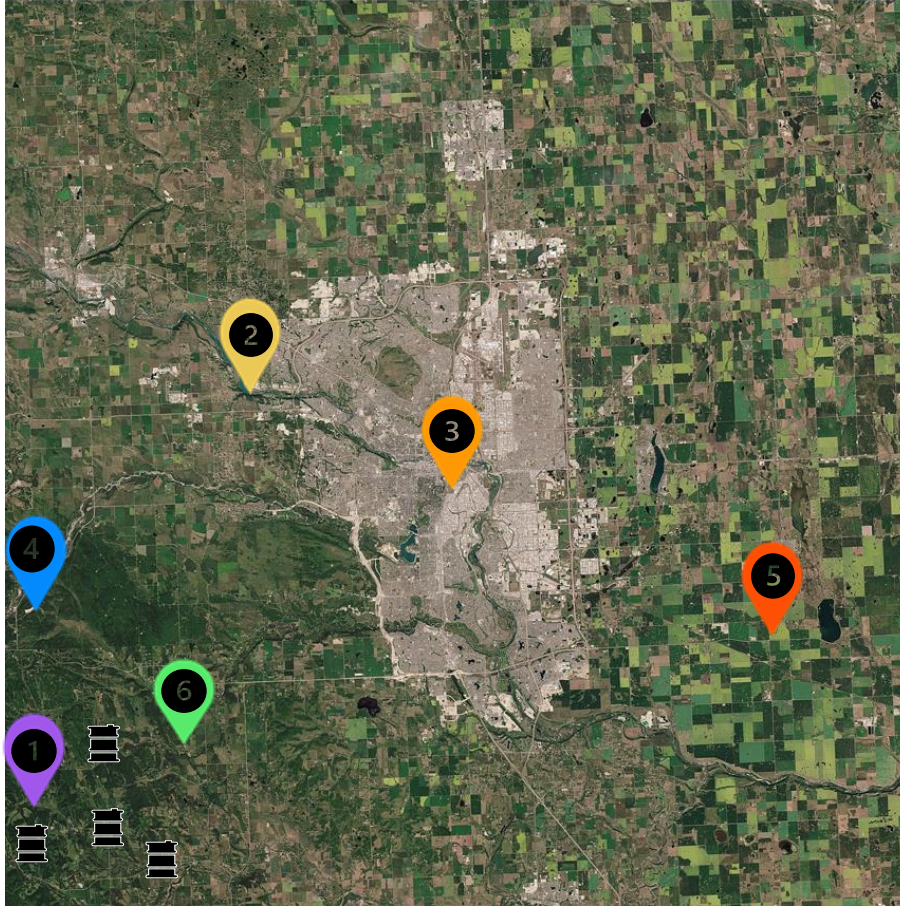
My town image:



# Calgary

## LEGEND:

- 1 Alberta Foothills
- 2 Bow River
- 3 
- 4 
- 5 Grasslands
- 6 Aspen parkland



# Notes

1. The Alberta Foothills, which are located between the Rockies and the Prairies, are full of resources such as oil and gas. The resource-rich area provides raw resources as well as job opportunities for nearby residents. They were formed alongside the Rocky Mountains due to tectonic plates converging millions of years ago.
2. The Bow River is a river that runs from the Rockies all the way through Calgary. It is a source of water for irrigation, wildlife, and recreation. It also adds to the natural beauty of the city, attracting tourists and potential residents. The river also provides hydroelectric power, a clean alternative to coal and gas, which are harmful to the environment. The Bow River was formed alongside the Elbow River by melting glaciers 10,000 years ago.
3. The climate in Calgary is sunny most of the year, making it Canada's sunniest major city. It gets 333 days of sunshine per year, and some of those days are in winter. The year-round sunshine makes Calgary a great place to grow crops, in addition to providing solar power. The high amount of sunshine is due to the distance between Calgary and the Pacific/Atlantic Oceans. Cities close to the ocean have more clouds (Vancouver, for example.)
4. Calgary experiences very cold winters. This benefits Calgary in the form of tourism and recreational activities such as skiing, snowboarding, and hiking. Stores that sell such equipment and cold-weather gear companies also would benefit from the climate. Calgary's high elevation and exposure to Arctic winds makes it very cold in winter. However, as mentioned above, it is sunny even in winter, and this makes for a naturally beautiful city.

# Notes

5. Grasslands: One type of vegetation that is present in Calgary is grass. Grass is abundant in Calgary because Calgary is located in the grassland region of Alberta, and the climate there is suitable for grass, but not much else. This makes Calgary ideal for cattle ranching, in addition to events like the Calgary Stampede.
6. Aspen parkland: Another type of vegetation is aspen trees. These trees are found in the aspen parkland eco-region of Alberta. Aspen trees are abundant in the forests west of Calgary. They are a source of lumber and create jobs for the people living in the area. In addition, they provide benefits just by existing. They play a crucial role in halting climate change by absorbing CO<sub>2</sub> from the air. Aspen parkland is a transitional biome between boreal forest and prairies, where the climate and soil is favorable to the growth of aspen trees.