



Psychological Lens Pecha Kucha
Presentation

EVIL ROBOT
MONKEY
BY MARY
ROBINETTE
KOWAL

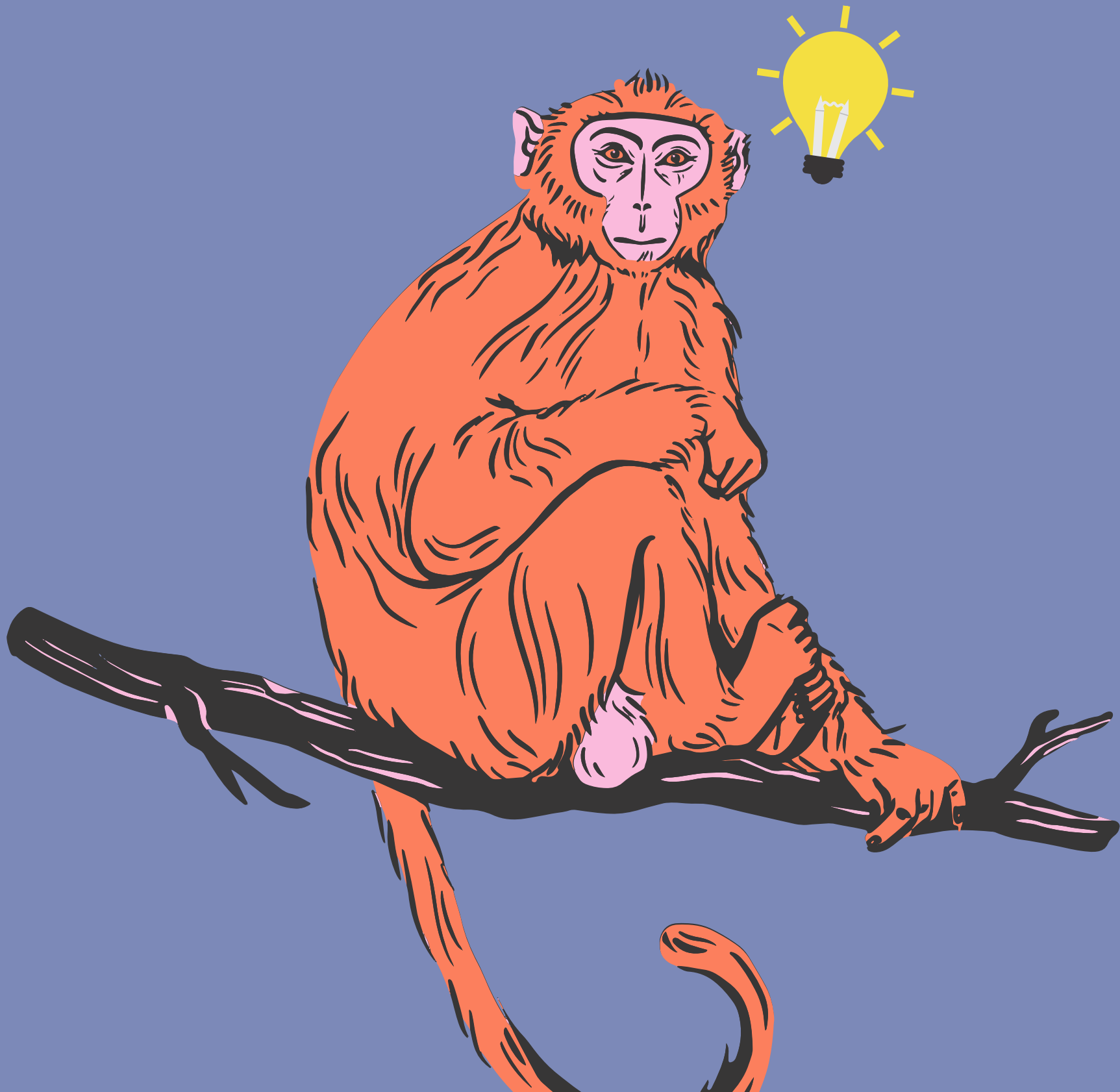
Presented by: Gianna and Annabelle

EVIL ROBOT MONKEY - SUMMARY

- Sly is an intelligent monkey living in an enclosure - has a "robot" implant in his head
- "Too smart to be with other chimps, but too much of an animal to be with humans" (3)
- He creates pottery out of clay, which is very important to him
- Sly is made fun of by children outside, and fights to control his anger against them
- Disciplined by Vern, a handler, who takes away his clay as a punishment



CHARACTER SUMMARY – SLY



- intelligent
- lonely
- angry
- powerful
- aggressive
- passionate about clay
- struggles to control emotions



WHAT IS ID, EGO, AND SUPEREGO?

ID

- biological part of personality
- instinctual, unconscious, primitive
- learned at birth
- not impacted by reality/logic
- selfish/wishful thinking



ID EVIDENCE

- Sly's happiness is interrupted by humans banging on the wall of his enclosure. This changes his psychological state to the "Id", the part of the mind in which intrinsic urges and main processes manifest.



ID QUOTE

Id behaviour of anger ensues when Sly is disturbed by the kids and teacher which prompts him to throw the clay: "He spun and hurled it at the picture window like feces" (Kowal 2).



EGO

- decision making personality
- realistic strategies
- aware of norms in society
- problem-solving
- self control



EGO EVIDENCE AND QUOTE

- With the statement, “He just wanted to make pottery” (Kowal 4). Sly’s psychological transition to the “ego” state is shown, as he uses this as a form of calming and problem solving.



SUPEREGO

- moralistic personality
- learnt from parents/childhood
- control's impulse
- values of the world around
- ideal self



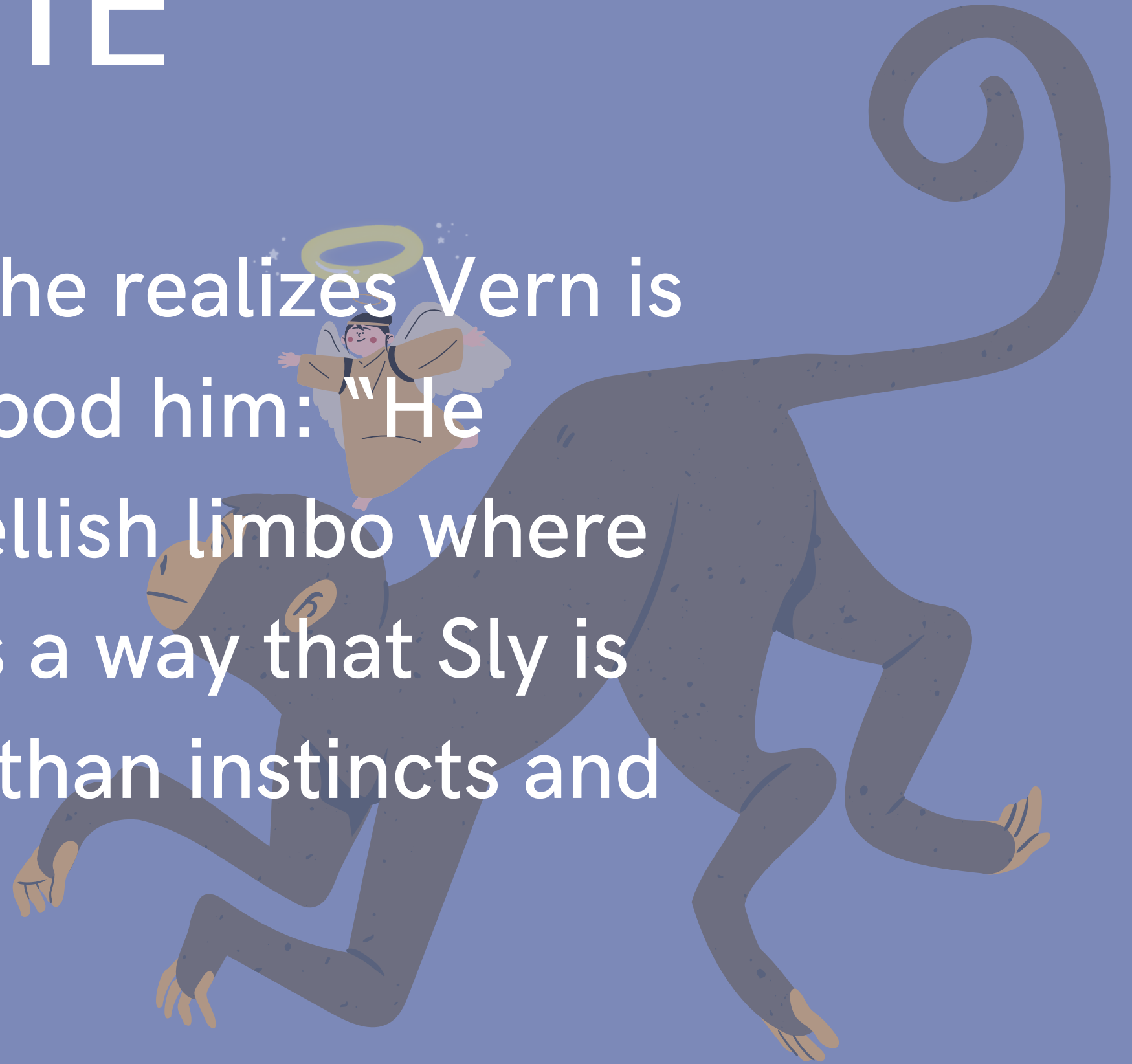
SUPEREGO EVIDENCE

- Sly is angry at his handler Vern for taking his clay away, but still manages to use his superego traits, and restrain himself from harming Vern with his anger.



SUPEREGO QUOTE

- Sly also uses superego when he realizes Vern is the only person who understood him: “He seemed to understand the hellish limbo where Sly lived...” (Kowal 3). This is a way that Sly is thinking about others rather than instincts and himself.



CHARACTER GROWTH

- primarily id personality at the start
 - "spun and hurled it at the picture window" (2)
 - "bared his teeth, knowing these people would take it as a grin, but he meant it as a threat" (2)
- purely instinctual, survival-driven actions
- wants to keep himself safe when feeling threatened
- does not think about others, just acts for himself

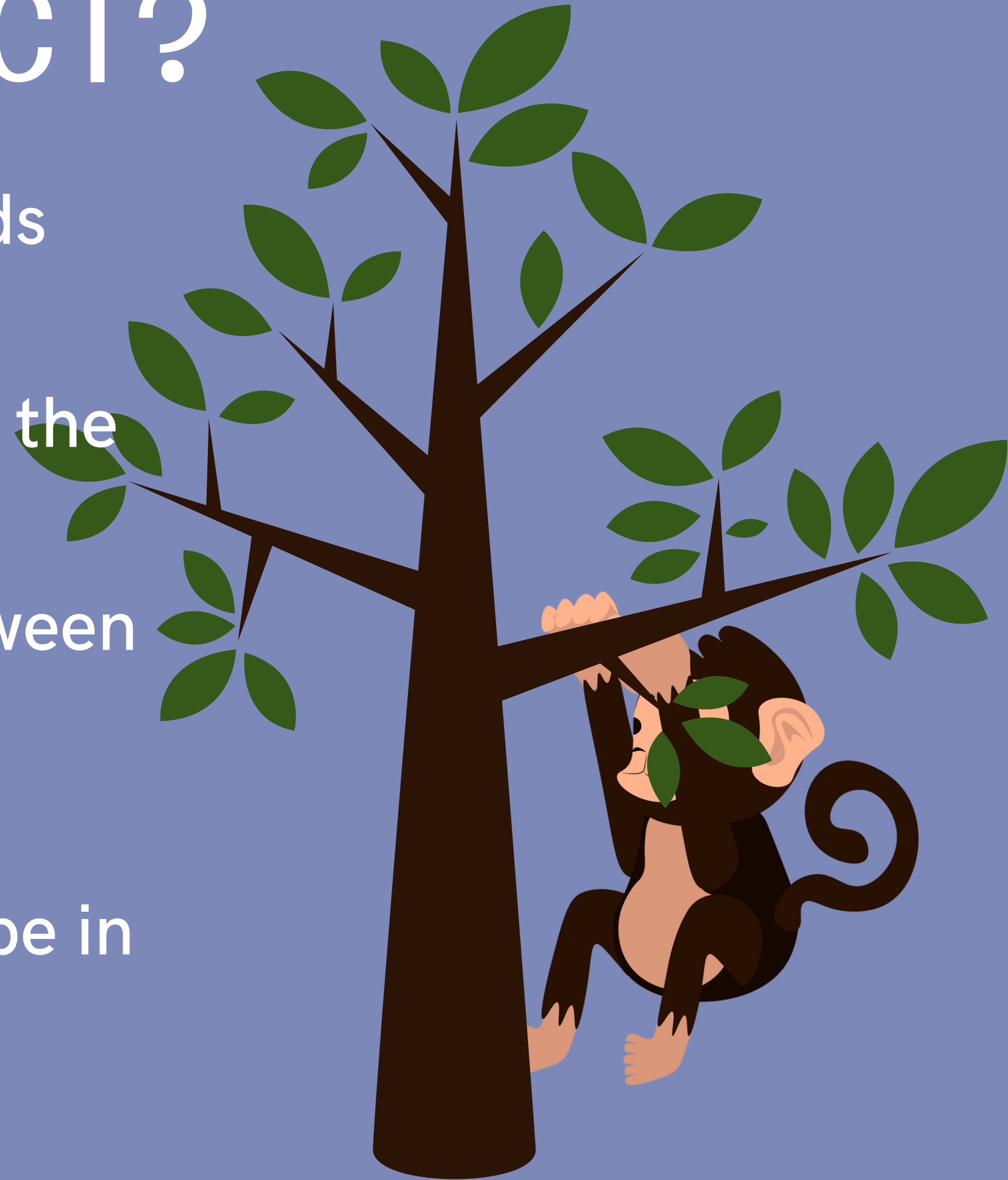


CHARACTER GROWTH

- Progresses to ego personality
 - "Buried his fingers in the clay to silence his thoughts" (3)
 - "Rage threatened to blind him, but he held on, clutching the wheel" (3)
- knows what the cost could be if he lashes out
- thinks twice before acting, tries to regulate himself

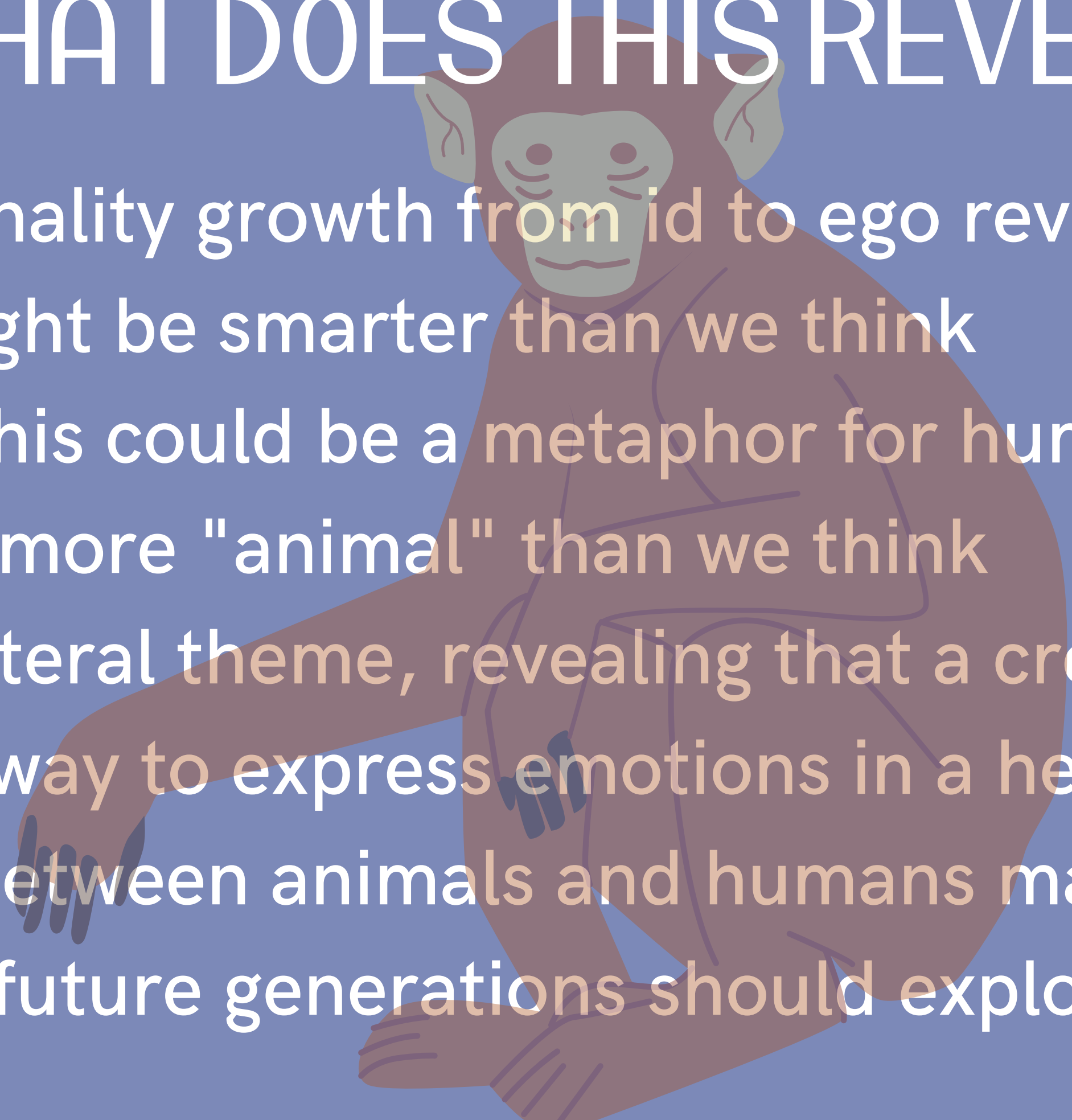
WHAT IS THE CONFLICT?

- sly needs to control his anger towards others
- he acts out towards children outside the enclosure
- Sly is having an internal conflict between staying in the animal world
- Sly is way too advanced to be in the animal world but way too animal to be in the human world
- he isn't sure where he belongs



WHAT DOES THIS REVEAL?

- Sly's personality growth from id to ego reveals how animals might be smarter than we think
- However, this could be a metaphor for humans, and how we may be more "animal" than we think
- Art is a central theme, revealing that a creative outlet could be a way to express emotions in a healthy way
- The bond between animals and humans may be something future generations should explore



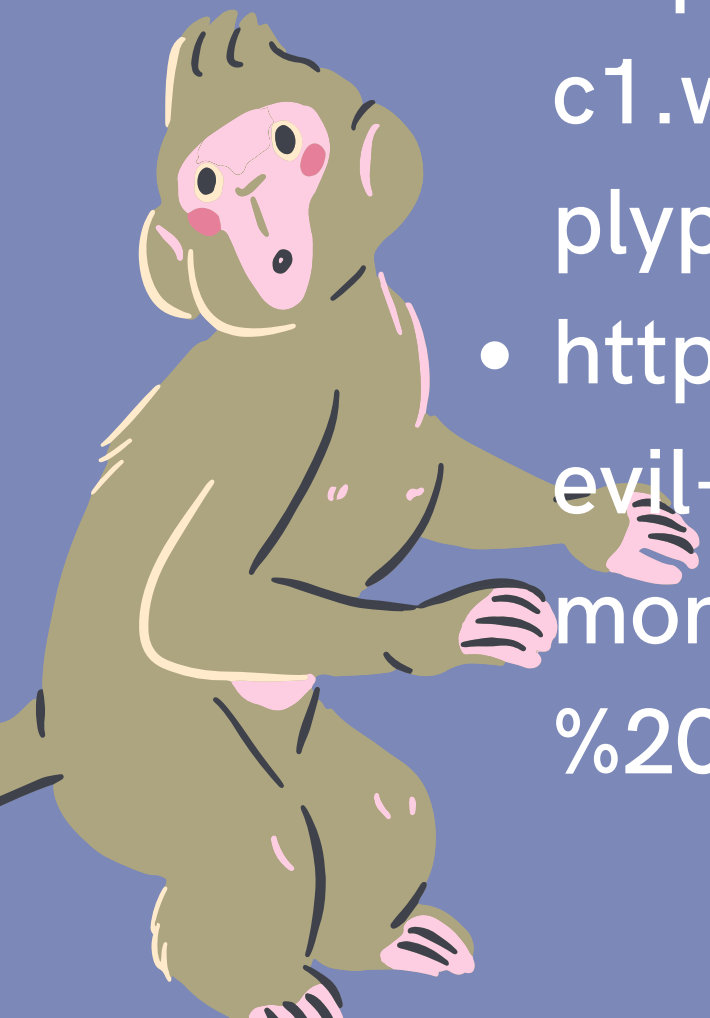
CONNECTIONS TO SOCIETY

- relevance of art and creativity
- the importance of individuality and unique personality
- control vs expression of powerful emotions
- personal expression as an outlet for anger
- interaction between humans and animals
- the power of proper communication



WORKS CITED

- <https://cpb-ca-c1.wpmucdn.com/myriverside.sd43.bc.ca/dist/b/55/files/2021/02/evilrobotmonkeyMRK.pdf>
- <https://cpb-ca-c1.wpmucdn.com/myriverside.sd43.bc.ca/dist/b/55/files/2017/10/simplypsychology.org-psyche-10czxts.pdf>
- <https://scifinewman.wordpress.com/student-blog-entries/entries-on-evil-robot-monkey/#:~:text=%E2%80%9CEvil%20Robot%20Monkey%E2%80%9D%20is%20about,art%20and%20the%20creative%20process.>



A stylized illustration of a yellow cat sitting on a red tree stump, viewed from behind. The cat has a long, thin red tail and is positioned in the center of the frame. The background is a solid blue color.

Thank you for listening!